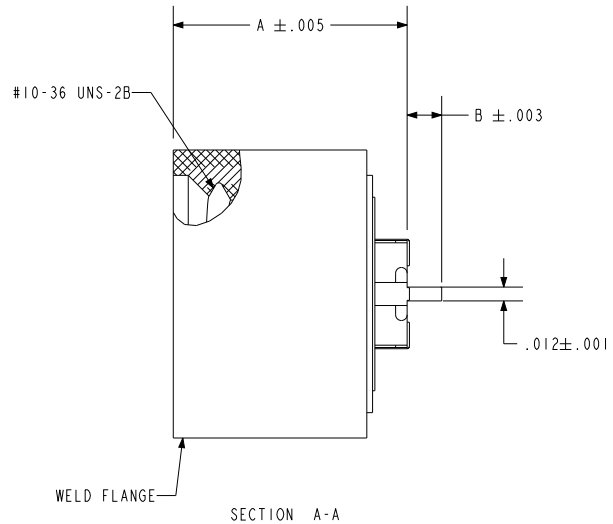
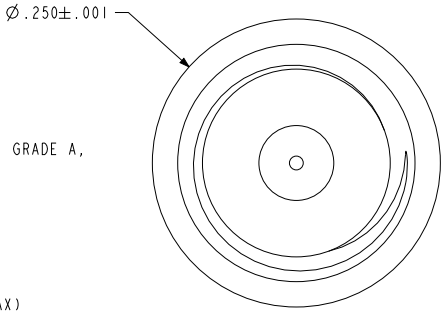


NOTES:

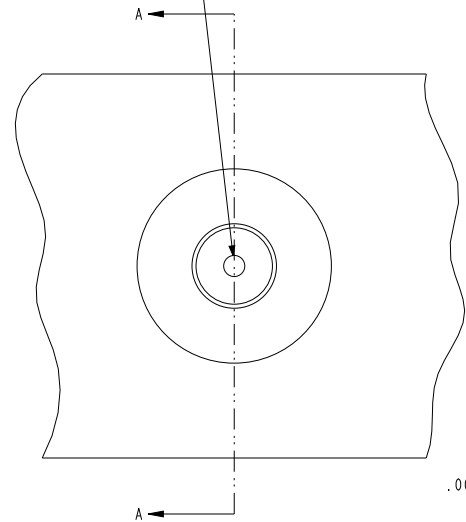
1. HERMETIC LEAK RATE: $\leq 1 \times 10^{-9}$ CC/SEC He AT 1 ATM DIFFERENTIAL PRESSURE.
2. NOMINAL IMPEDENCE: 50 OHMS.
3. DIELECTRIC WITHSTANDING VOLTAGE: 500 VAC RMS MIN. @ SEA LEVEL.
4. INSULATION RESISTANCE: 5000 MEGOHMS MINIMUM.
5. DESIGNED TO BE LASER WELDED TO ALUMINUM ALLOY 6061 HOUSING.
6. MATERIALS:
 WELD FLANGE: 4000 SERIES ALUMINUM
 CONTACT: KOVAR IAW ASTM-F15 OR MIL-I-23011.
 INSULATOR: 7070 CORNING GLASS OR EQUIVALENT.
 GROUND SPRING: S.ST. IAW ASTM-A276 OR QQ-S-763.
7. FINISH: PIN AND BODY
 NICKEL PLATE PER IAW MIL-C-26074, .000100/.000250 THICK.
 GOLD PLATE PER ASTM B488, TYPE III, CODE A OR MIL-G-45204, TYPE III, GRADE A, .000050/.000150 THICK.
8. ORDERING INFORMATION:
 PLEASE SELECT ACCORDING TO THE FOLLOWING:

EXAMPLE: 92763 - 200 - 030

B = PIN EXTENSION (.020 MIN/.120 MAX)
 A = BODY LENGTH (.190 OR .200)
 BASE PART NUMBER



$\varnothing .0275 \pm .0010$ THRU
 $\varnothing .0995 \pm .0005$
 $\varnothing .110 \times 90^\circ \pm 5$
 $\varnothing .253 \pm .001$



HOLE DETAIL
SCALE 4.000

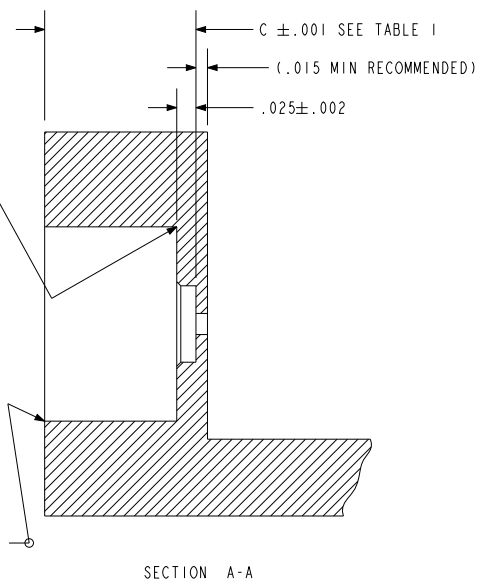
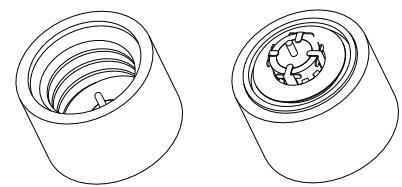


TABLE I	
PART NUMBER	C
92763-190-X	.187
92763-200-X	.197



SCALE 3.000

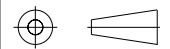


134 Olds Station Rd. Wenatchee, Washington 98801

WWW.PACAERO.COM

TITLE:
ALUMINUM LASER WELDABLE .012 RF SSMA CONNECTOR

THIRD ANGLE PROJECTION



CAGE CODE: 64567

VERSION
D.1

RELEASE DATE:
01-22-08

SALES DRAWING

SHEET:
1 OF 1

DOCUMENT:
0-92763