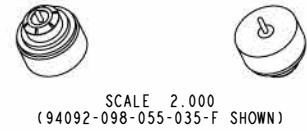
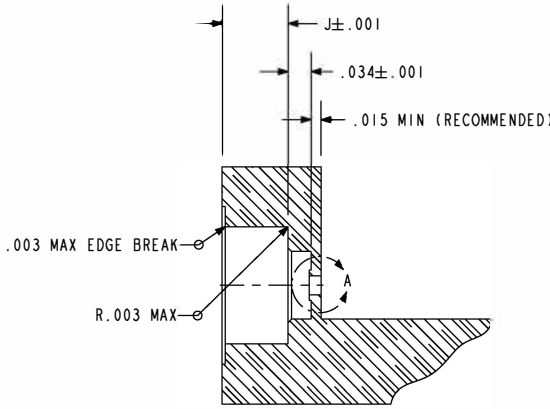
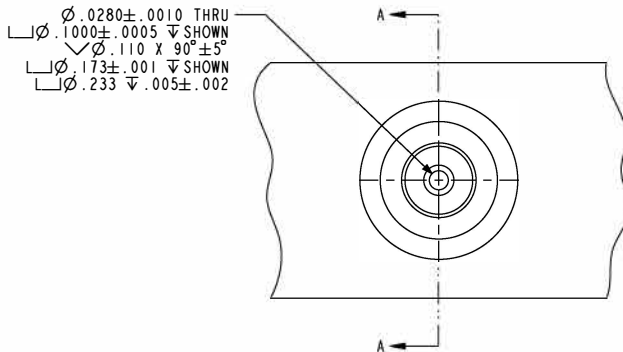
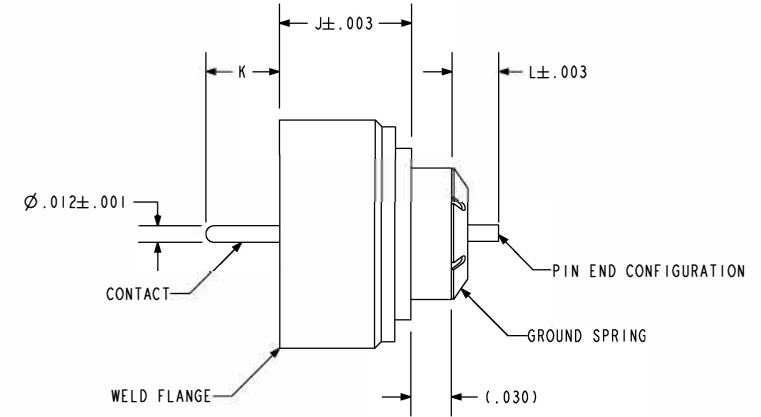
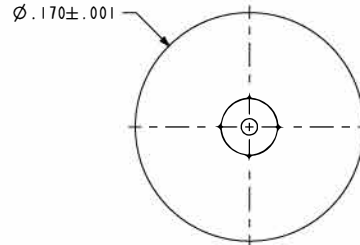


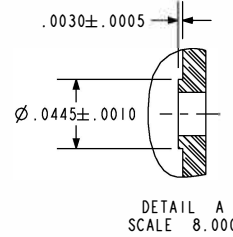
NOTES:


1. INTERFACE PER MIL-STD-348.
2. HERMETIC LEAK RATE: LESS THAN OR EQUAL TO 1×10^{-9} CC/SEC He AT 1 ATM DIFFERENTIAL PRESSURE.
3. NOMINAL IMPEDANCE: 50 OHMS.
4. INSULATION RESISTANCE: 5000 MEGOHMS MINIMUM.
5. DESIGNED TO BE LASER WELDED INTO TITANIUM HOUSINGS.
6. MATERIALS:
 WELD FLANGE: TITANIUM.
 CONTACT: KOVAR 1AW ASTM-F15 OR EQUIVALENT.
 INSULATOR: 7070 CORNING GLASS OR EQUIVALENT.
 GROUND SPRING: BeCu-172/173 1AW ASTM-B194, TD04.
7. FINISH:
 NICKEL PLATE 1AW ASTM B733, TYPE I, CLASS 4, .000100/.000250 THICK.
 GOLD PLATE 1AW ASTM B488, TYPE III, CODE A, .000050/.000150 THICK.
8. ORDERING INFORMATION:
 PLEASE SPECIFY ACCORDING TO THE FOLLOWING:
 94092 - 098 - 055 - 035 - F

PIN END CONFIGURATION
 F = FLAT
 R = ROUND
 L = HERMETIC PIN EXTENSION (.035 MIN)
 K = AMBIENT PIN EXTENSION
 J = BODY LENGTH (.098/.113)
 BASE PART NUMBER



HOLE DETAIL
SCALE 3.500



 434 Olds Station Rd. Wenatchee, Washington 98801 WWW.PACAERO.COM	
TITLE: CONNECTOR, RF, FLANGE MOUNT, TI-COMPATIBLE	
VERSION: 1.1 RELEASE DATE: 01-06-11	SHEET: 1 OF 1 DOCUMENT: 0-94092

SALES DRAWING