

NOTES:

- 1. HOLES AND INTERFACE DIMENSIONS PER MIL-DTL-24308.
- 2. MATEABLE WITH CONNECTORS MANUFACTURED PER MIL-DTL-24308.
- 3. DESIGNED TO BE LASER WELDED INTO ALUMINUM HOUSINGS.
- 4. HERMETIC LEAK RATE: LESS THAN OR EQUAL TO  $1 \times 10^{-9}$  CC/SEC He AT 1 ATM DIFFERENTIAL PRESSURE.
- 5. ELECTRICAL REQUIREMENTS:

INSULATION RESISTANCE: GREATER THAN 5,000 MEGOHMS AT  $500 \pm 10\%$  VDC AT 25°C  
WHEN TESTED IAW MIL-STD-1344, METHOD 3003.

DIELECTRIC WITHSTANDING VOLTAGE: MUST SHOW NO EVIDENCE OF BREAKDOWN OR FLASHOVER  
WHEN SUBJECTED TO 600 VAC RMS 60Hz IAW MIL-STD-1344, METHOD 3001.  
DURATION OF APPLICATION TO BE 1 SEC MIN.

6. MATERIALS:

SHELL: EXPLOSION BONDED STAINLESS STEEL TO 4XXX-SERIES ALUMINUM.  
CONTACTS: BERYLLIUM-COPPER IAW ASTM B196/B197.  
INSULATORS: KRYOFLEX 313 PROPRIETARY POLYCRYSTALLINE CERAMIC.  
HELICAL INSERTS: 300-SERIES STAINLESS STEEL.

7. FINISH:

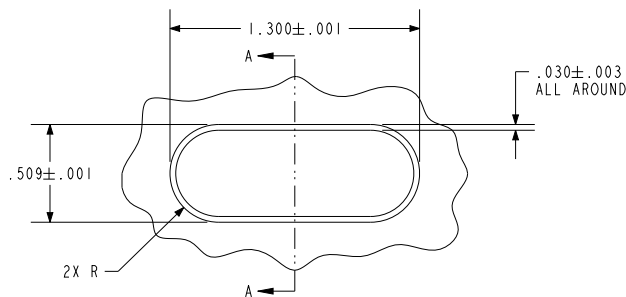
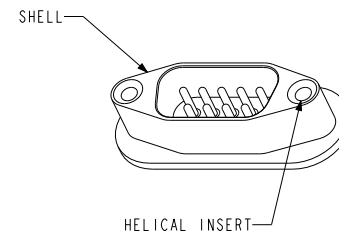
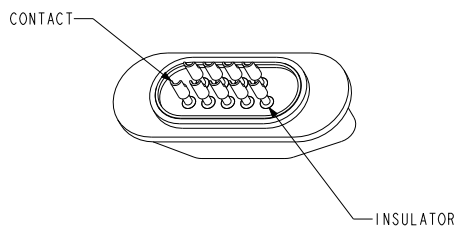
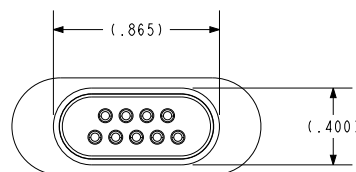
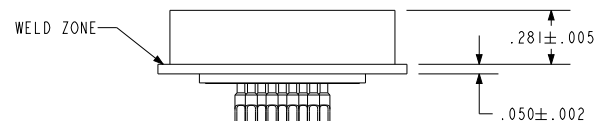
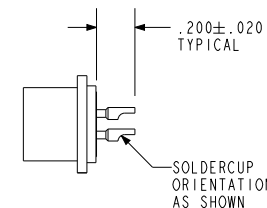
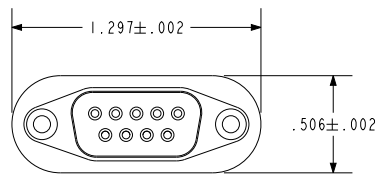
CONTACTS: ELECTROLYTIC NICKEL PLATE IAW QQ-N-290, .000100/.000250 THICK.  
GOLD PLATE IAW ASTM B488, TYPE II, CODE C OR MIL-G-45204, TYPE II, GRADE C,  
.000050/.000100 THICK.

SHELL: CHEMICAL CONVERSION COAT PER MIL-C-5541, CLASS IA.

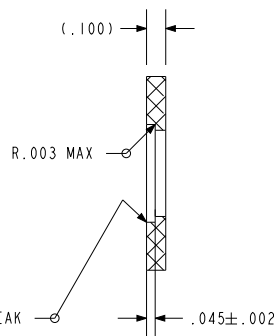
8. ORDERING INFORMATION:

PLEASE SPECIFY ACCORDING TO THE FOLLOWING: 92393-X

- 1 = STANDARD SOLDER CUPS (26 TO 24 AWG)
- 2 = LARGE SOLDER CUPS (18 AWG)



HOLE DETAIL



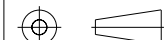
SECTION A-A

**PAC-E** A Division of **HERMETIC SOLUTIONS**  
The Resource Advantage. Advanced Technology  
434 Olds Station Rd. Wenatchee WA 98801

WWW.PACAERO.COM

TITLE: FLANGED AC SUB-D CONNECTOR INTFC. PER MS18272

THIRD ANGLE PROJECTION



CAGE CODE: 64567

VERSION: D.2

RELEASE DATE: 09-29-09

SALES DRAWING

SHEET: 1 OF 1

DOCUMENT: 0-92393