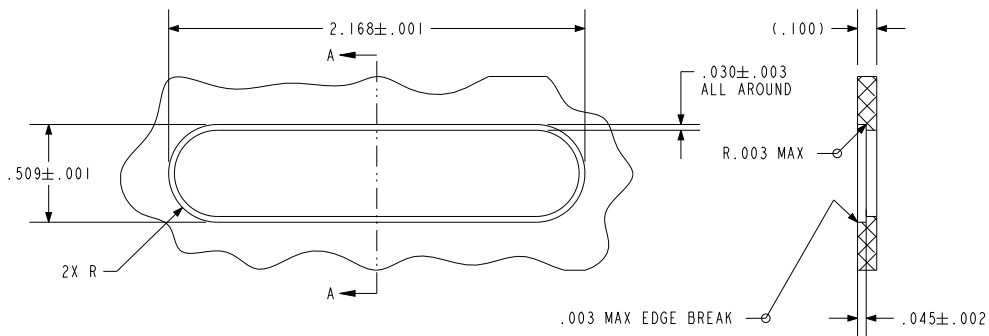
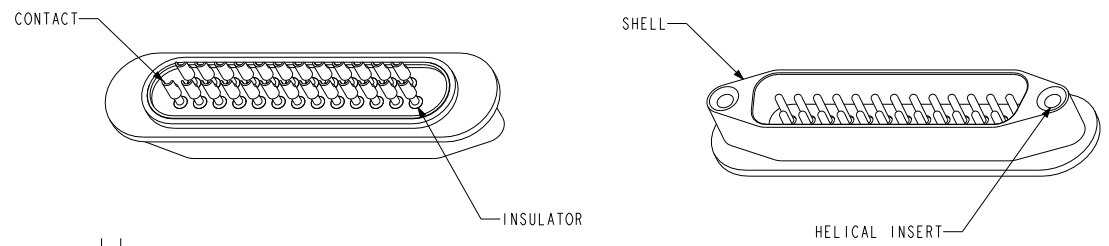
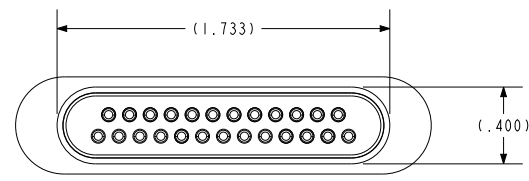
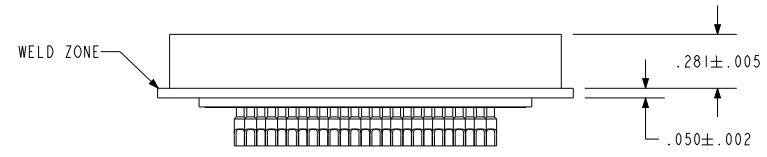
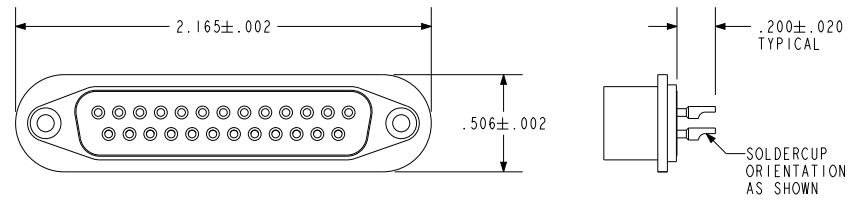


NOTES:

1. HOLES AND INTERFACE DIMENSIONS PER MIL-DTL-24308.
2. MATEABLE WITH CONNECTORS MANUFACTURED PER MIL-DTL-24308.
3. DESIGNED TO BE LASER WELDED INTO ALUMINUM HOUSINGS.
4. HERMETIC LEAK RATE: LESS THAN OR EQUAL TO  $1 \times 10^{-8}$  CC/SEC He AT 1 ATM DIFFERENTIAL PRESSURE.
5. ELECTRICAL REQUIREMENTS:
  - INSULATION RESISTANCE: GREATER THAN 5,000 MEGOHMS AT  $500 \pm 10\%$  VDC AT 25°C WHEN TESTED IAW MIL-STD-1344, METHOD 3003.
  - DIELECTRIC WITHSTANDING VOLTAGE: MUST SHOW NO EVIDENCE OF BREAKDOWN OR FLASHOVER WHEN SUBJECTED TO 600 VAC RMS 60Hz IAW MIL-STD-1344, METHOD 3001. DURATION OF APPLICATION TO BE 1 SEC MIN.
6. MATERIALS:
  - SHELL: EXPLOSION BONDED STAINLESS STEEL TO 4XXX-SERIES ALUMINUM.
  - CONTACTS: BERYLLIUM-COPPER IAW ASTM B196/B197.
  - INSULATORS: KRYOFLEX 313 PROPRIETARY POLYCRYSTALLINE CERAMIC.
  - HELICAL INSERTS: 300-SERIES STAINLESS STEEL.
7. FINISH:
  - CONTACTS: ELECTROLYTIC NICKEL PLATE IAW QQ-N-290, .000100/.000250 THICK.
  - GOLD PLATE IAW ASTM B488, TYPE II, CODE C OR MIL-G-45204, TYPE II, GRADE C, .000050/.000100 THICK.
  - SHELL: CHEMICAL CONVERSION COAT PER MIL-C-5541, CLASS 1A.
8. ORDERING INFORMATION:
  - PLEASE SPECIFY ACCORDING TO THE FOLLOWING: 92413-1



HOLE DETAIL

SECTION A-A

**PA&E**  
 A Division of  
**HERMETIC SOLUTIONS**  
 Enabling Technology  
 434 Olds Station Rd. Wenatchee WA 98801

WWW.PACAERO.COM

TITLE: CONNECTOR, SUB-D, STD-PROFILE, AL-COMPATIBLE, 25 PIN W/SOLDERCUPS		THIRD ANGLE PROJECTION 	
VERSION D.1		CAGE CODE: 64567	
RELEASE DATE: 01-18-08		SHEET: 1 OF 1	
<b>SALES DRAWING</b>		DOCUMENT: 0-92413	