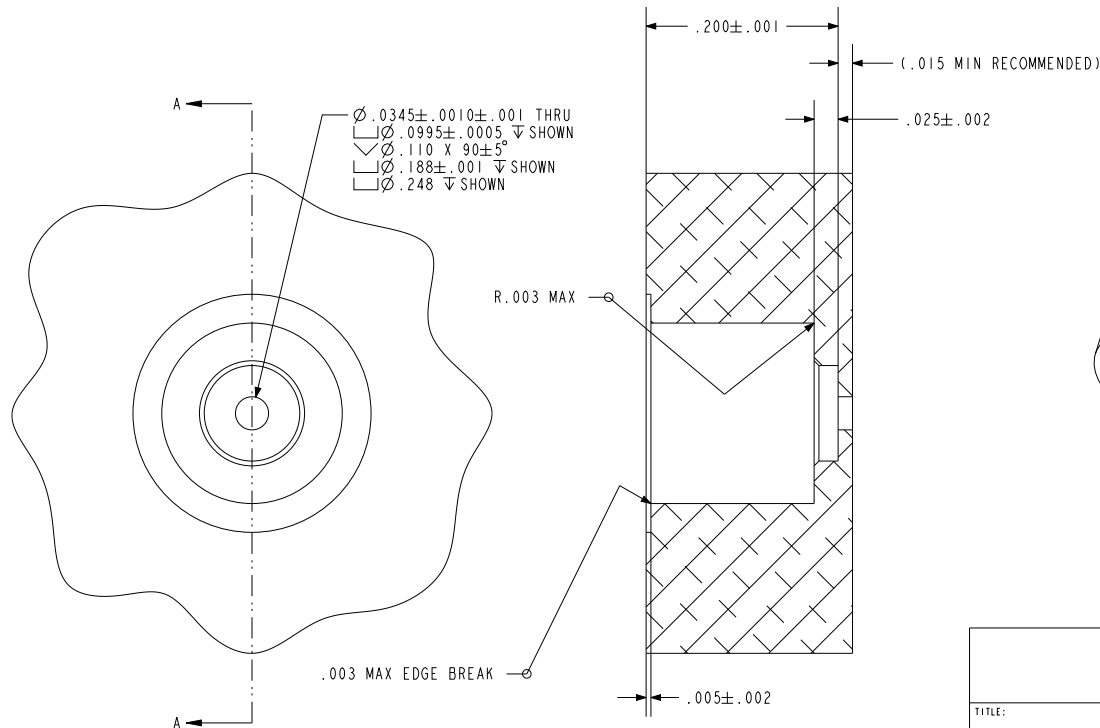
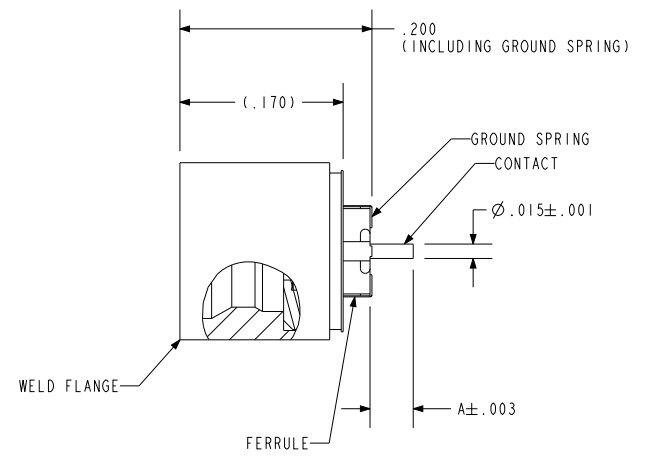
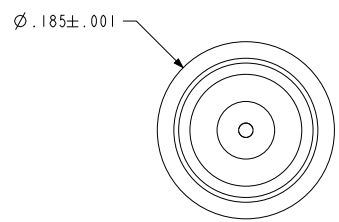
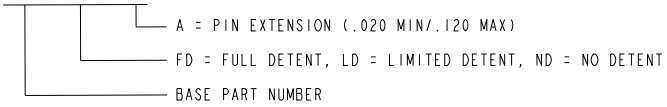


NOTES:

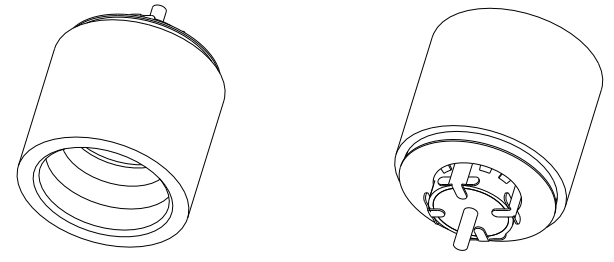
1. HERMETIC LEAK RATE: LESS THAN OR EQUAL TO 1×10^{-9} CC/SEC He AT 1 ATM DIFFERENTIAL PRESSURE.
2. NOMINAL IMPEDANCE: 50 OHMS.
3. INSULATION RESISTANCE: 5000 MEGOHMS MINIMUM.
4. DESIGNED TO BE LASER WELDED TO ALUMINUM ALLOY 6061 HOUSINGS.
5. MATERIALS:
 WELD FLANGE: 4000 SERIES ALUMINUM
 CONTACT: KOVAR IAW ASTM-F15 OR MIL-I-23011.
 INSULATOR: 7070 CORNING GLASS OR EQUIVALENT.
 GROUND SPRING: S.ST. IAW ASTM-A276 OR QQ-S-763.
6. FINISH:
 NICKEL PLATE IAW MIL-C-26074, TYPE 4 .000100/.000250 THICK.
 GOLD PLATE IAW ASTM B488, TYPE III, CODE A OR MIL-G-45204, TYPE III, GRADE A, .000050/.000150 THICK.
 WELD FLANGE: CONVERSION COATED IAW MIL-C-5541, CL IA
7. ORDERING INFORMATION:
 PLEASE SPECIFY ACCORDING TO THE FOLLOWING:

EXAMPLE: 92666 - FD - 045



HOLE DETAIL

SECTION A-A

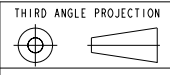


SCALE 5.000

P&E
 A Division of
HERMETIC SOLUTIONS
 Enabling Technology
 434 Olds Station Rd. Wenatchee WA 98801

WWW.PACAERO.COM

TITLE: ALUMINUM LASER WELDABLE PUSH-ON (LWP) RF CONNECTOR



CAGE CODE: 64567

VERSION: AC.1
 RELEASE DATE: 01-22-08

SALES DRAWING

SHEET: 1 OF 1

DOCUMENT: 0-92666