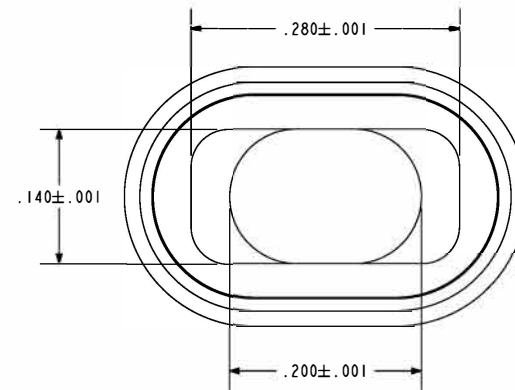
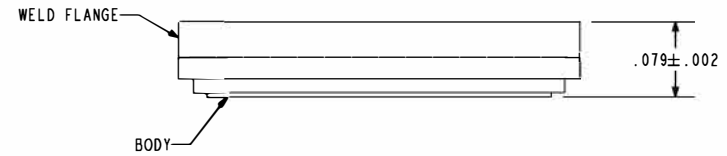
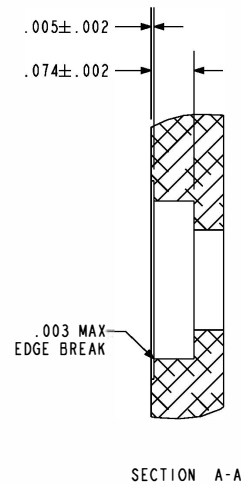
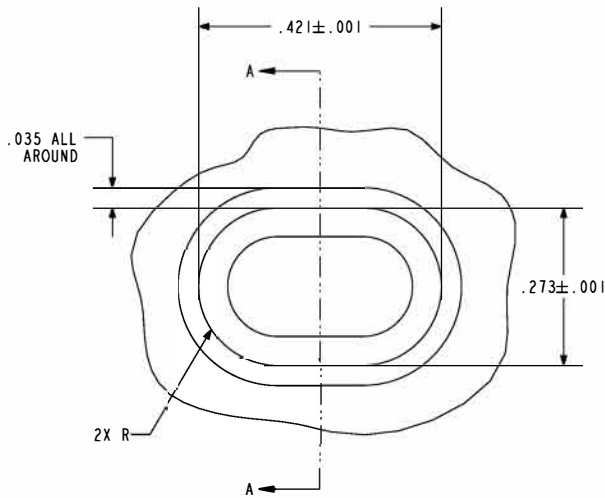
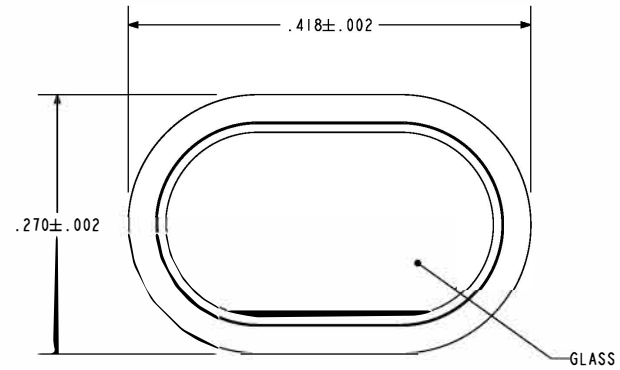


NOTES:

1. DESIGNED TO BE LASER WELDED TO AN ALUMINUM HOUSING.
2. HERMETIC LEAK RATE: LESS THAN OR EQUAL TO 1×10^{-9} CC/SEC He AT 1 ATM DIFFERENTIAL PRESSURE.
3. MATERIALS:
 WELD FLANGE: EXPLOSION BONDED STAINLESS STEEL TO 4XXX-SERIES ALUMINUM.
 BODY: Ni/Fe/Co (KOVAR) IAW ASTM-F15.
 GLASS: CLEAR 7070 CORNING GLASS.
4. FINISH:
 BODY: ELECTROLYTIC NICKEL PLATE IAW QQ-N-290, .000100/.000250 THICK.
 WELD FLANGE: CHEMICAL CONVERSION COAT IAW MIL-C-5541, CLASS 1A.
5. ORDERING INFORMATION:
 PLEASE SPECIFY ACCORDING TO THE FOLLOWING
 92843 - I



RECOMMENDED HOLE DETAIL



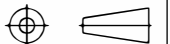
434 Olds Station Rd. Wenatchee WA 98801

WWW.PACAERO.COM

TITLE:

WINDOW ASSEMBLY, WAVEGUIDE (WR-28)

THIRD ANGLE PROJECTION



CAGE CODE: 64567

VERSION F.0

RELEASE DATE: 04-12-12

SALES DRAWING

SHEET: 1 OF 1

DOCUMENT: 0-92843