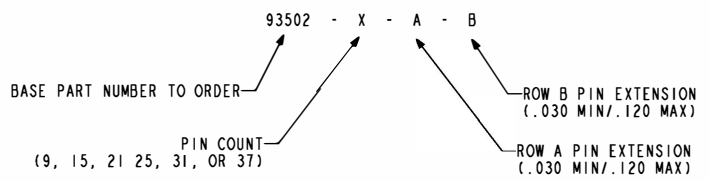


NOTES:

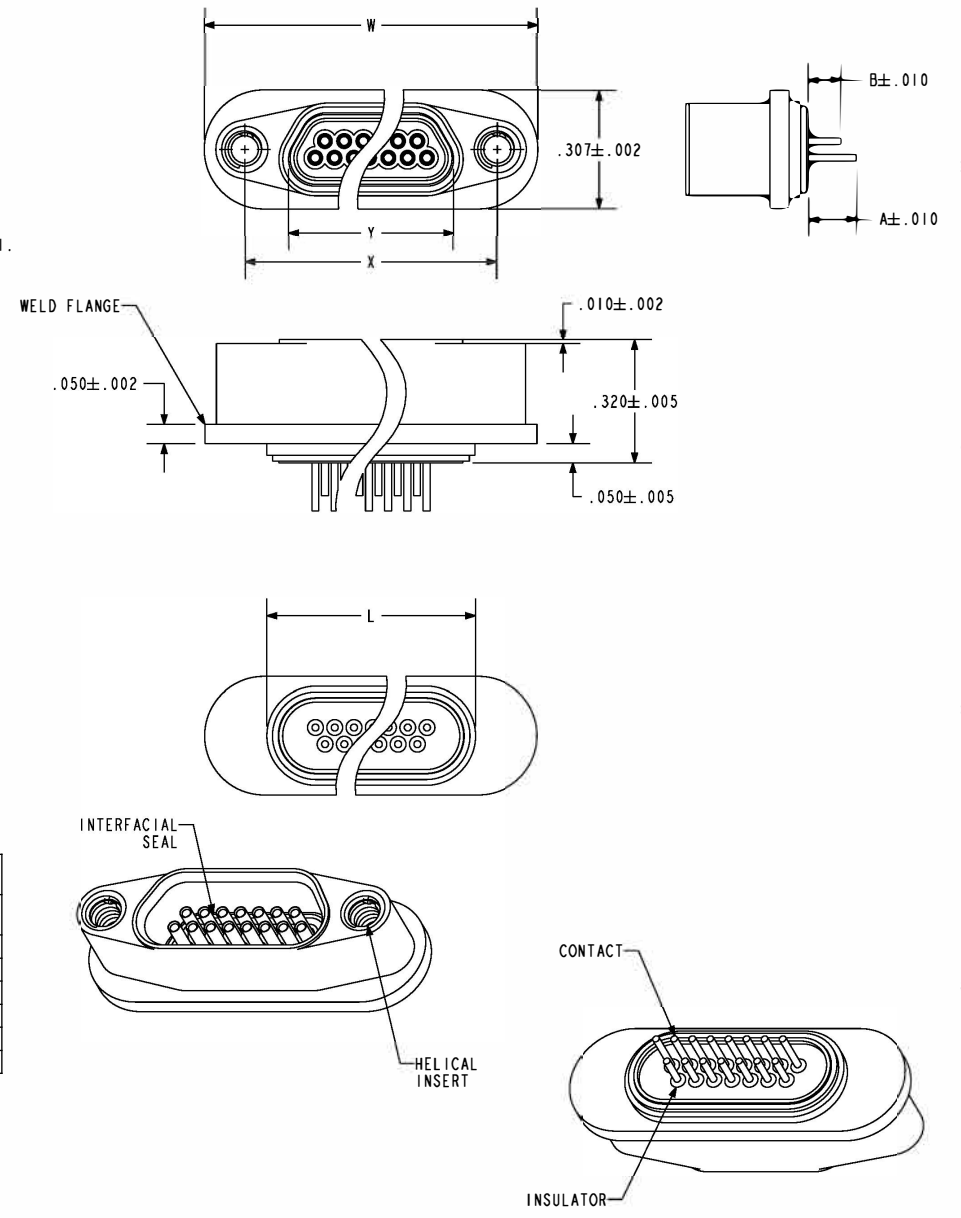
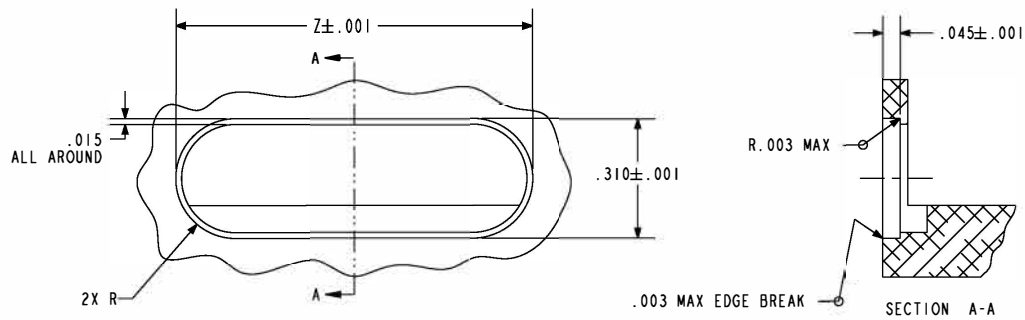
1. HOLES AND INTERFACE DIMENSIONS PER MIL-PRF-83513/2.
2. MATEABLE WITH CONNECTORS MANUFACTURED PER MIL-PRF-83513/1 AND MIL-PRF-83513/3.
3. DESIGNED TO BE LASER WELDED TO AN ALUMINUM HOUSING.
4. HERMETIC LEAK RATE: LESS THAN OR EQUAL TO 1×10^{-9} CC/SEC He AT 1 ATM DIFFERENTIAL PRESSURE.
5. ELECTRICAL REQUIREMENTS:
 - INSULATION RESISTANCE: GREATER THAN 5,000 MEGOHMS AT $500 \pm 10\%$ VDC AT $25^{\circ}C$ WHEN TESTED IAW MIL-STD-1344, METHOD 3003.
 - DIELECTRIC WITHSTANDING VOLTAGE: MUST SHOW NO EVIDENCE OF BREAKDOWN OR FLASHOVER WHEN SUBJECTED TO 600 VAC RMS 60Hz IAW MIL-STD-1344, METHOD 3001. DURATION OF APPLICATION TO BE 1 SEC MIN.
6. MATERIALS:
 - WELD FLANGE: 4XXX SERIES ALUMINUM.
 - CONTACTS: BERYLLIUM-COPPER IAW ASTM B196 OR ASTM B197.
 - INSULATORS: KRYOFLEX 313 PROPRIETARY POLYCRYSTALLINE CERAMIC.
 - INTERFACIAL SEAL: FLUOROSILICONE RUBBER IAW MIL-R-25988, CLASS I, TYPE II, GRADE 60.
 - HELICAL INSERTS: 300-SERIES STAINLESS STEEL.
7. FINISH CONTACTS: ELECTROLYTIC NICKEL PLATE IAW QQ-N-290, .000100/.000200 THICK. GOLD PLATE IAW ASTM-B488, TYPE III, CODE A, .000050/.000150 THICK.
- SHELL: CONVERSION COAT IAW MIL-C-5541, CLASS IA

8. ORDERING INFORMATION:

PLEASE SPECIFY ACCORDING TO THE FOLLOWING



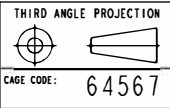
NUMBER OF CONTACTS	W	X	Y	Z	L
9	.775	.565	.336	.778	.452
15	.925	.715	.486	.928	.602
21	1.075	.865	.636	1.078	.752
25	1.175	.965	.736	1.178	.852
31	1.325	1.115	.886	1.328	1.002
37	1.475	1.265	1.036	1.478	1.152



PAC-E
A Division of
HERMETIC SOLUTIONS
434 Olds Station Rd. Wenatchee WA 98801

WWW.PACAERO.COM

TITLE: CONNECTOR, MICRO-D, AL-COMPATIBLE, STD-PROFILE



VERSION: B.1
RELEASE DATE: 01-24-11

SALES DRAWING

SHEET: 1 OF 1

DOCUMENT: 0-93502