

NOTES:

- 1. DESIGNED FOR LASER WELDING TO A TITANIUM HOUSING.
- 2. HERMETIC LEAK RATE: LESS THAN OR EQUAL TO 1×10^{-9} CC/SEC He AT 1 ATM DIFFERENTIAL PRESSURE.
- 3. ELECTRICAL REQUIREMENTS:
 - INSULATION RESISTANCE: GREATER THAN 5,000 MEGOHMS AT $500 \pm 10\%$ VDC AT 25°C WHEN TESTED IAW MIL-STD-1344, METHOD 3003.
 - DIELECTRIC WITHSTANDING VOLTAGE: MUST SHOW NO EVIDENCE OF BREAKDOWN OR FLASHOVER WHEN SUBJECTED TO 500 VAC RMS 60Hz IAW MIL-STD-1344, METHOD 3001. DURATION OF APPLICATION TO BE 1 SEC MIN.

4. MATERIALS:

SHELL: EXPLOSION BONDED 304L STAINLESS STEEL TO GRADE 1 OR 2 TITANIUM.
 CONTACTS: INCONEL X-750 IAW AMS 5698.
 INSULATORS: KRYOFLEX 313 PROPRIETARY POLYCRYSTALLINE CERAMIC.

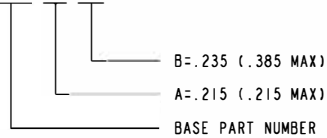
5. FINISH:

CONTACTS: ELECTROLYTIC NICKEL PLATE IAW QQ-N-290, .000100/.000250 THICK.
 GOLD PLATE IAW ASTM-B488, TYPE III, CODE A .000050/.000150 THICK.

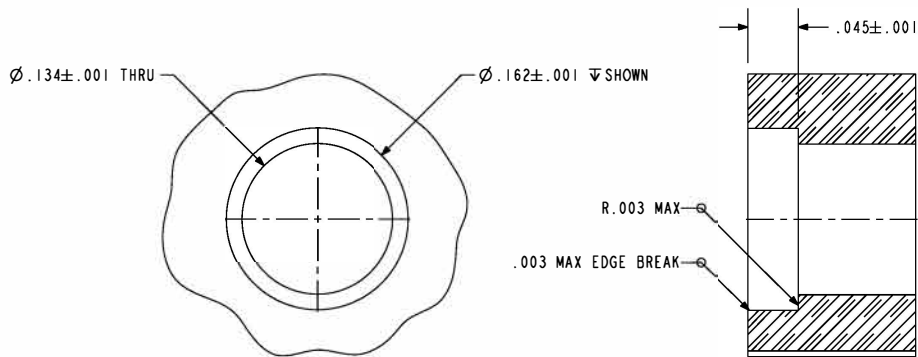
6. ORDERING INFORMATION:

PLEASE SPECIFY ACCORDING TO THE FOLLOWING.

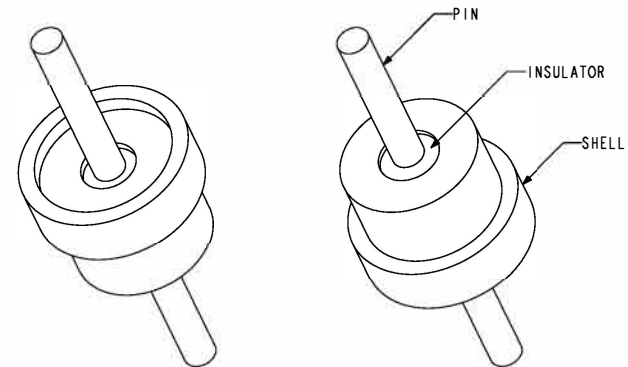
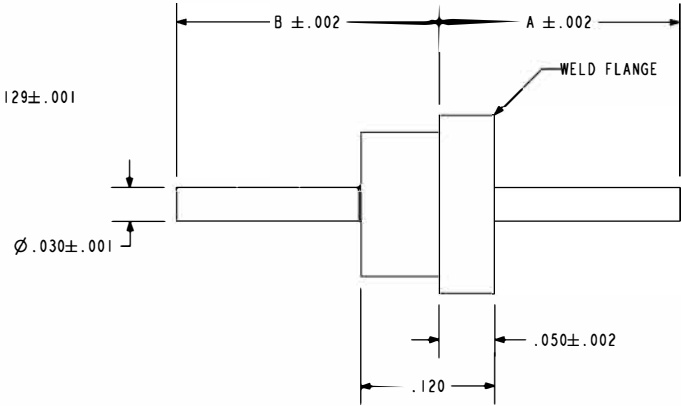
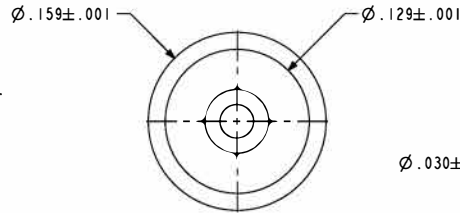
EXAMPLE: 93730-215-235



SCALE 1.000
 (93730-215-235 SHOWN)



HOLE DETAIL



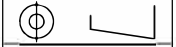
SECTION A-A

PA&E A Division of
HERMETICSOLUTIONS
 The Hermetic Association
 434 Olds Station Rd. Wenatchee WA 98801

TITLE:
 FEEDTHRU, SINGLE PIN, Ti-COMPATIBLE

WWW.PACAERO.COM

THIRD ANGLE PROJECTION



CAGE CODE: 64567

VERSION: -.0
 RELEASE DATE: 11-09-06

SALES DRAWING

SHEET: 1 OF 1

DOCUMENT: 0-93730