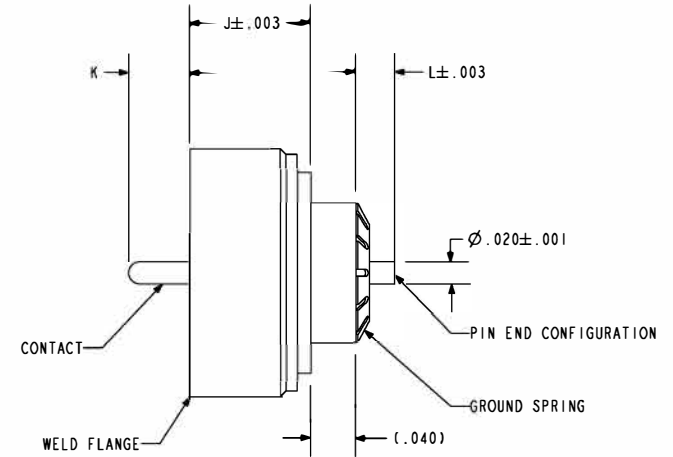
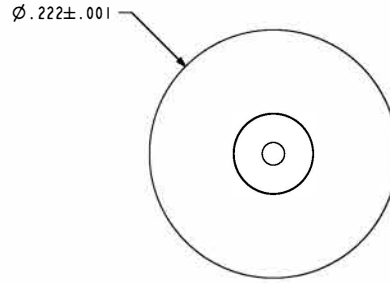


NOTES:

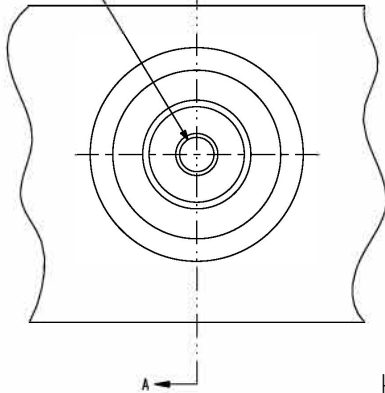
- HERMETIC LEAK RATE: LESS THAN OR EQUAL TO 1×10^{-9} CC/SEC He AT 1 ATM DIFFERENTIAL PRESSURE.
- NOMINAL IMPEDANCE: 50 OHMS.
- INSULATION RESISTANCE: 5000 MEGOHMS MINIMUM.
- DESIGNED TO BE LASER WELDED INTO ALUMINUM 6061 HOUSINGS.
- MATERIALS:
WELD FLANGE: 4000 SERIES ALUMINUM.
CONTACT: KOVAR 1AW ASTM-F15 EQUIVALENT.
INSULATOR: 7070 CORNING GLASS OR EQUIVALENT.
GROUND SPRING: BeCu-172/173 1AW ASTM-B194, TD04.
- FINISH:
NICKEL PLATE 1AW ASTM B733, TYPE 1, CLASS 4, .000100/.000250 THICK.
GOLD PLATE 1AW ASTM B488, TYPE III, CODE A, .000050/.000150 THICK.
WELD FLANGE: CONVERSION COATED 1AW MIL-C-5541, CL 1A
- GROUND SPRING SHIPPED LOOSE AND UNATTACHED.
- ORDERING INFORMATION:
PLEASE SPECIFY ACCORDING TO THE FOLLOWING:

93979 - 108 - 055 - 035 - F

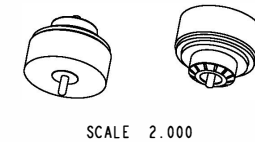
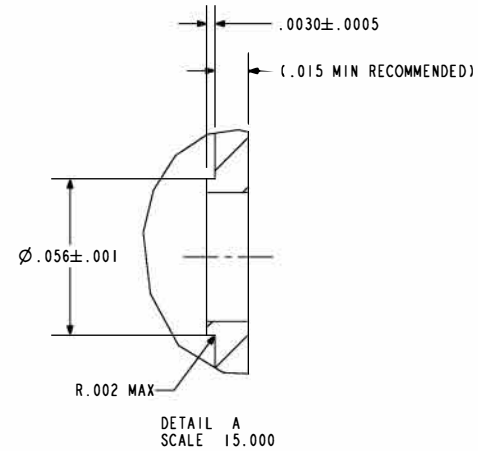
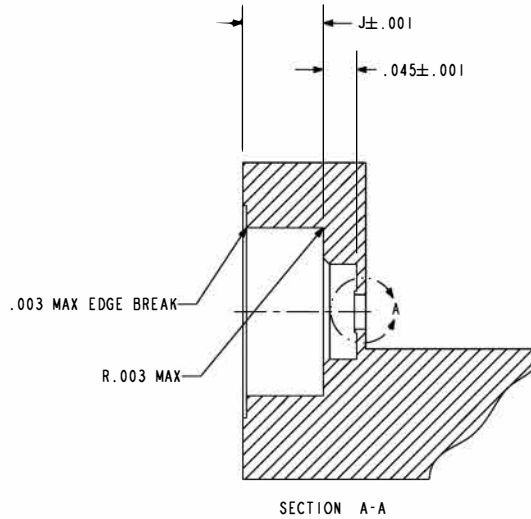
- F = PIN END CONFIGURATION
F = FLAT
R = ROUND
- L = HERMETIC PIN EXTENSION (.035 MIN)
- K = AMBIENT PIN EXTENSION
- J = BODY LENGTH (.078/.083/.108)
- BASE PART NUMBER



$\phi .0460 \pm .0010$ THRU
 $\phi .1275 \pm .0005$ ∇ SHOWN
 $\nabla \phi .145 \times 90^\circ \pm 5^\circ$
 $\phi .225 \pm .001$ ∇ SHOWN
 $\phi .285 \nabla .005 \pm .002$



HOLE DETAIL
SCALE 4.000



P&E
A Division of
HERMETIC SOLUTIONS
Enabling Technology
434 Olds Station Rd. Wenatchee WA 98801

WWW.PACAERO.COM

TITLE:
CONNECTOR, RF, FLANGE MOUNT, LASER WELDABLE, HIGH PERFORMANCE,
ALUMINUM COMPATIBLE

THIRD ANGLE PROJECTION

CAGE CODE: 64567
DOCUMENT: 0-93979

VERSION: 1
RELEASE DATE: 01-23-07

SALES DRAWING

SHEET: 1 OF 1