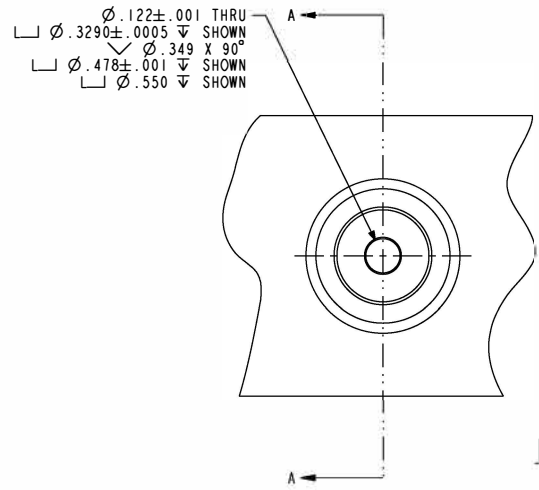
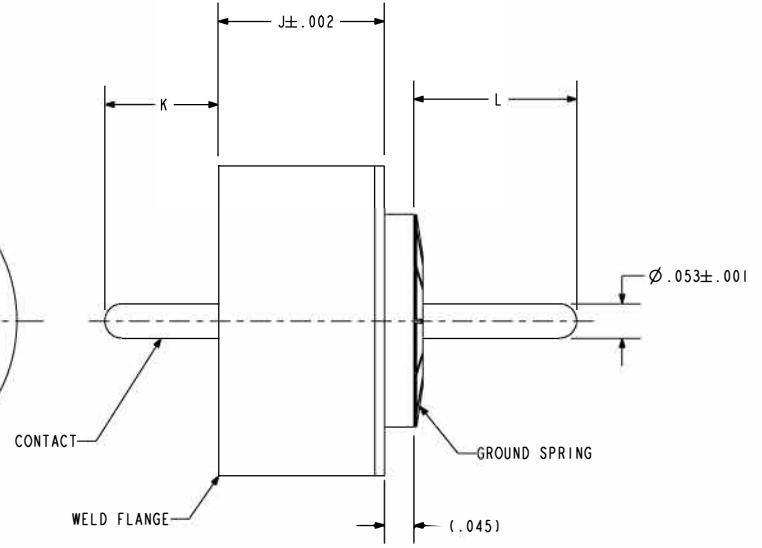
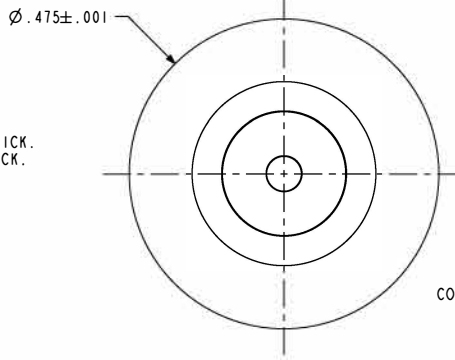
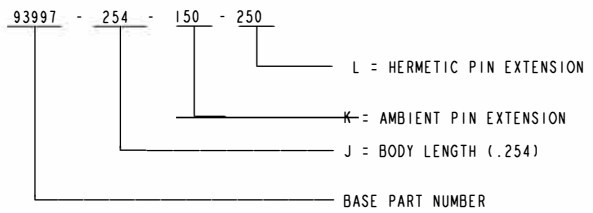
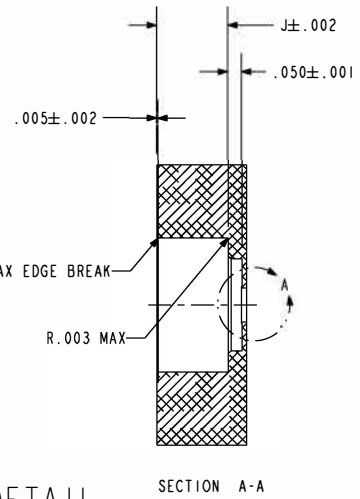


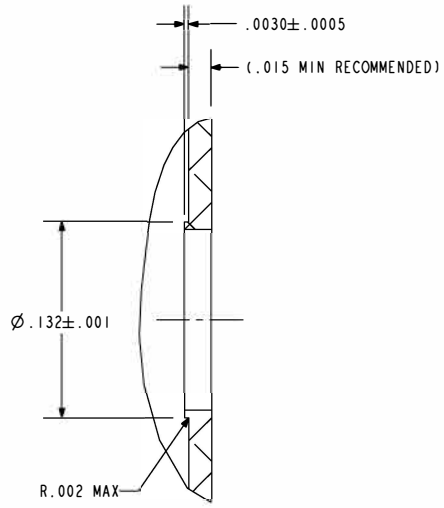
NOTES:
 1. HERMETIC LEAK RATE: LESS THAN OR EQUAL TO 1×10^{-9} CC/SEC He AT 1 ATM DIFFERENTIAL PRESSURE.
 2. NOMINAL IMPEDANCE: 50 OHMS.
 3. INSULATION RESISTANCE: 5000 MEGOHMS MINIMUM.
 4. DESIGNED TO BE LASER WELDED INTO ALUMINUM 6061 HOUSINGS.
 5. MATERIALS:
 WELD FLANGE: 4000 SERIES ALUMINUM.
 CONTACT: KOVAR IAW ASTM-F15 OR EQUIVALENT.
 INSULATOR: 7070 CORNING GLASS OR EQUIVALENT.
 INSULATOR INSERT: TEFLON.
 GROUND SPRING: BeCu-172/173 IAW ASTM-B194, TD04.
 6. FINISH: (PIN AND GROUND SPRING)
 NICKEL PLATE IAW ASTM B733, TYPE 1, CLASS 1, OR EQUIVALENT, .000100/.000250 THICK.
 GOLD PLATE IAW ASTM B488, TYPE III, CODE A, OR EQUIVALENT, .000050/.000150 THICK.
 WELD FLANGE: CONVERSION COATED IAW MIL-C-5541, CL 1A
 7. GROUND SPRING SHIPPED LOOSE AND UNATTACHED.
 8. ORDERING INFORMATION:
 PLEASE SPECIFY ACCORDING TO THE FOLLOWING:



HOLE DETAIL
 SCALE 1.500



SECTION A-A



DETAIL A
 SCALE 8.000



SCALE 1.000

PACAE
 The Hermetic Advantage
 A Division of
HERMETICSOLUTIONS
 Enabling Technology
 434 Olds Station Rd. Wenatchee WA 98801

WWW.PACAERO.COM

TITLE:
 CONNECTOR, RF, FLANGE MOUNT, LASER WELDABLE, HIGH POWER,
 ALUMINUM COMPATIBLE

THIRD ANGLE PROJECTION

CAGE CODE: 64567

VERSION: C-1
 RELEASE DATE: 01-23-07

SALES DRAWING

SHEET: 1 OF 1

DOCUMENT: 0-93997