

NOTES:

- HOLES AND INTERFACE DIMENSIONS PER MIL-PRF-83513/2.
- MATEABLE WITH CONNECTORS MANUFACTURED PER MIL-PRF-83513/1 AND MIL-PRF-83513/3.
- DESIGNED TO BE LASER WELDED INTO TITANIUM HOUSINGS.
- HERMETIC LEAK RATE: LESS THAN OR EQUAL TO 1×10^{-9} CC/SEC He AT 1 ATM DIFFERENTIAL PRESSURE.
- ELECTRICAL REQUIREMENTS:
 - INSULATION RESISTANCE: GREATER THAN 5,000 MEGOHMS AT $500 \pm 10\%$ VDC AT 25°C WHEN TESTED IAW MIL-STD-1344, METHOD 3003.
 - DIELECTRIC WITHSTANDING VOLTAGE: MUST SHOW NO EVIDENCE OF BREAKDOWN OR FLASHOVER WHEN SUBJECTED TO 500 VAC RMS 60 Hz IAW MIL-STD-1344, METHOD 3001. DURATION OF APPLICATION TO BE 1 SEC MIN.

- MATERIALS:
 - SHELL: EXPLOSION BONDED 300-SERIES STAINLESS STEEL TO TITANIUM GRADE 1 OR 2.
 - CONTACTS: BERYLLIUM-COPPER IAW ASTM B196 OR ASTM B197.
 - INSULATORS: KRYOFLEX 313 PROPRIETARY POLYCRYSTALLINE CERAMIC.
 - INTERFACIAL SEAL: FLUOROSILICONE RUBBER IAW MIL-R-25988, CLASS 1, TYPE II, GRADE 60.

- FINISHES:
 - CONTACTS: ELECTROLYTIC NICKEL PLATE IAW QQ-N-290, .000050/.000150 THICK.
 - GOLD PLATE IAW ASTM-B488, TYPE III, CODE C, .000050/.000100 THICK.

- ORDERING INFORMATION:
 - PLEASE SPECIFY ACCORDING TO THE FOLLOWING

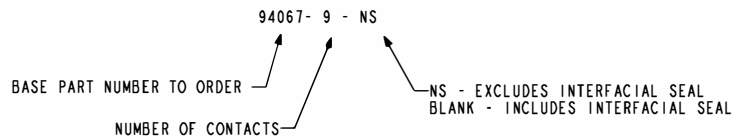
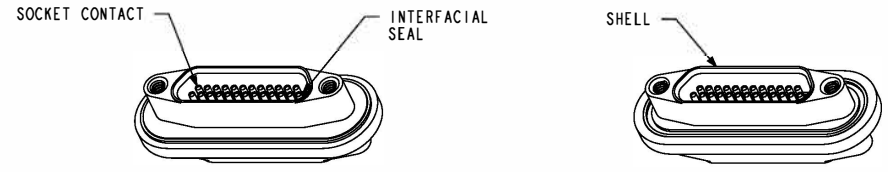
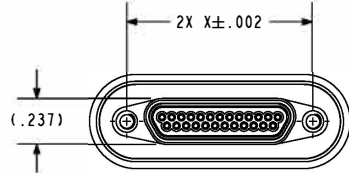
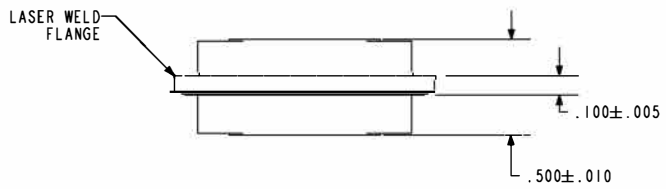
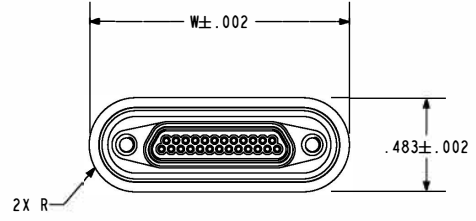
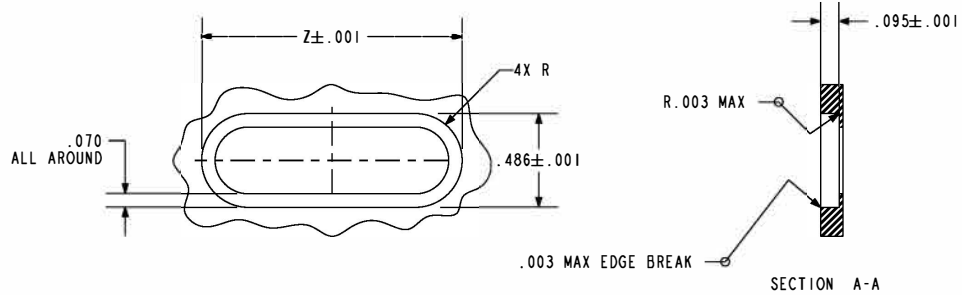


TABLE I				
PART NUMBER	W	X	Z	CONTACTS
94067-9	.951	.565	.954	9
94067-15	1.101	.715	1.104	15
94067-21	1.251	.865	1.254	21
94067-25	1.351	.965	1.354	25
94067-31	1.501	1.115	1.504	31
94067-37	1.651	1.265	1.654	37



(-25 SHOWN FOR REFERENCE ONLY)



HOLE DETAIL

A Division of
HERMETIC SOLUTIONS
Enabling Technology

434 Olds Station Rd. Wenatchee WA 98801

WWW.PACAERO.COM

TITLE: CONNECTOR, MICRO-D, DOUBLE-ENDED, TI COMPATIBLE		THIRD ANGLE PROJECTION 	
VERSION: B.0		CAGE CODE: 64567	
RELEASE DATE: 02-13-12		DOCUMENT: 0-94067	
SALES DRAWING		SHEET: 1 OF 1	