

NOTES:

- 1. DESIGNED TO BE LASER WELDED TO A STAINLESS STEEL HOUSING.
- 2. HERMETIC LEAK RATE: LESS THAN OR EQUAL TO 1×10^{-9} CC/SEC He AT 1 ATM DIFFERENTIAL PRESSURE.
- 3. ELECTRICAL REQUIREMENTS:

DIELECTRIC WITHSTANDING VOLTAGE: THERE SHALL BE NO EVIDENCE OF BREAKDOWN, FLASHOVER OR DETERIORATION WHEN SUBJECTED TO 500 VOLTS DC.

INSULATION RESISTANCE: SHALL BE $> = 5,000$ MEGOHMS AT 500 VDC.

4. MATERIALS:

SHELL: STAINLESS STEEL 304L.
 CONTACT: BERYLLIUM-COPPER.
 POTTING: BACON INDUSTRIES P-85.
 INSULATOR: KRYOFLEX 313 PROPRIETARY POLYCRYSTALLINE CERAMIC.

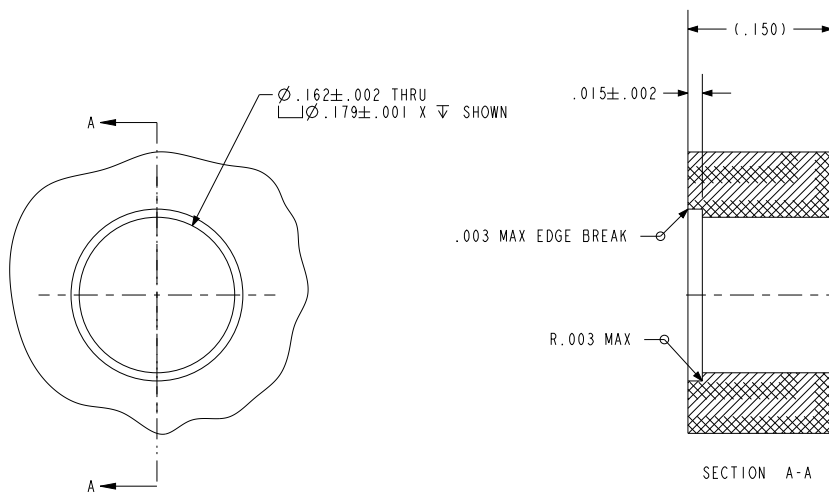
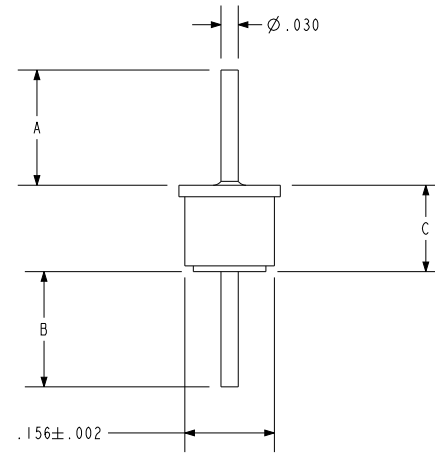
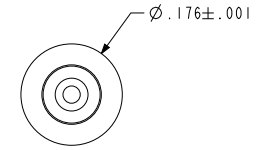
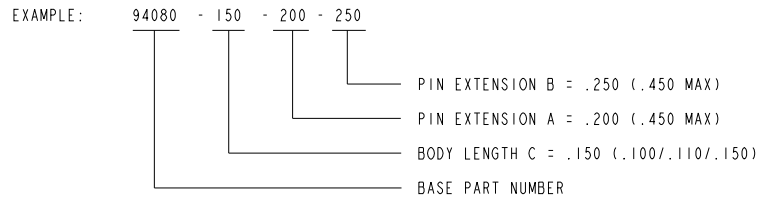
5. FINISH:

PIN: ELECTROLYTIC NICKEL PLATE 1AW QQ-N-290, .000100/.000250 THICK.
 GOLD PLATE 1AW ASTM B 488, TYPE III, CODE A, .000050/.000100 THICK.

SHELL: UNPLATED TO ALLOW LASER WELD.

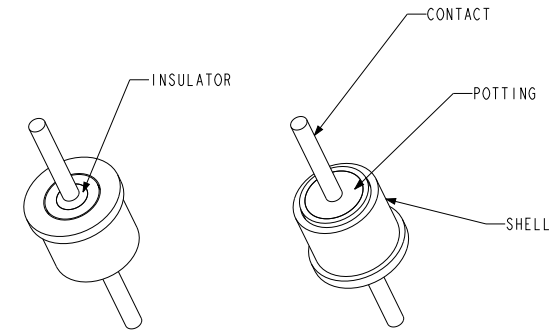
6. ORDERING INFORMATION:

PLEASE SPECIFY ACCORDING TO THE FOLLOWING



HOLE DETAIL SCALE 5.000

SECTION A-A

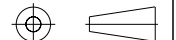


PA&E A Division of HERMETIC SOLUTIONS
 434 Olds Station Rd. Wenatchee WA 98801

TITLE: FEEDTURU, SINGLE PIN, SST COMPATIBLE (.030 PIN)

WWW.PACAERO.COM

THIRD ANGLE PROJECTION



CAGE CODE: 64567

VERSION: -.0
 RELEASE DATE: 06-26-08

SALES DRAWING

SHEET: 1 OF 1

DOCUMENT: 0-94080