

NOTES:

1. HOLE DIMENSIONS PER PAE-40458
2. DESIGNED TO BE LASER WELDED TO AN ALUMINUM HOUSING.
3. HERMETIC LEAK RATE LESS THAN OR EQUAL TO 1×10^{-9} CC/SEC He AT 1 ATM DIFFERENTIAL PRESSURE.
4. DESIGNED TO MATE WITH PAE PART NUMBER 94663.
5. ELECTRICAL REQUIREMENTS:
 - INSULATION RESISTANCE: GREATER THAN 50,000 MEGOHMS AT $500 \pm 10\%$ AT 25°C WHEN TESTED IAW MIL-STD-1344 METHOD 3003.
 - DIELECTRIC WITHSTANDING VOLTAGE: MUST SHOW NO EVIDENCE OF BREAKDOWN OR FLASHOVER WHEN SUBJECTED TO 600 VAC RMS 60Hz IAW MIL-STD-1344, METHOD 3001. DURATION OF APPLICATION TO BE 1 SEC MIN.
6. MATERIAL:
 - SHELL EXPLOSION BONDED STAINLESS STEEL TO 4XXXX-SERIES ALUMINUM.
 - CONTACTS: BERYLLIUM-COPPER IAW ASTM B196 OR ASTM B197
 - INSULATORS: KRYOFLEX 313-16 PROPRIETARY POLYCRYSTALLINE CERAMIC
 - INTERFACIAL SEAL FLOUROSIL CONE RUBBER IAW MIL-R-25988, CLASS I, TYPE II, GRADE 60.
7. FINISH:
 - CONTACTS: ELECTROLYTIC NICKEL PLATE IAW QQ-290 .000100/.000250 THICK
 - GOLD PLATE IAW ASTM-B488. TYPE I GRADE A, .000125/.000200 THICK.
 - WELD FLANGE:
 - CHEMICAL CONVERSION COAT IAW MIL-DTL-5541, CLASS IA.
8. ORDERING INFORMATION:

PLEASE SPECIFY ACCORDING TO THE FOLLOWING:

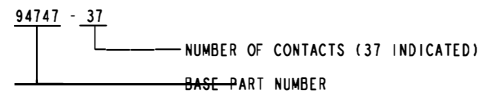
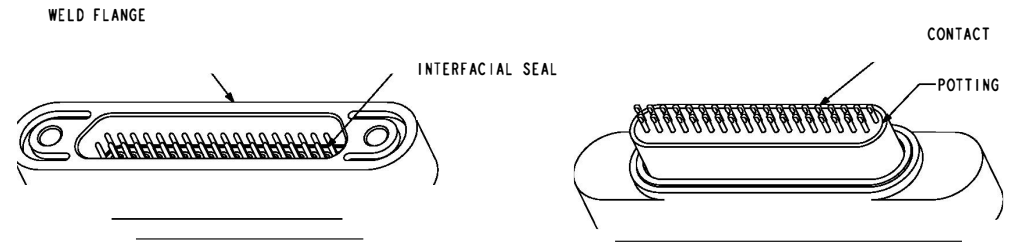
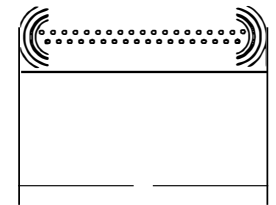
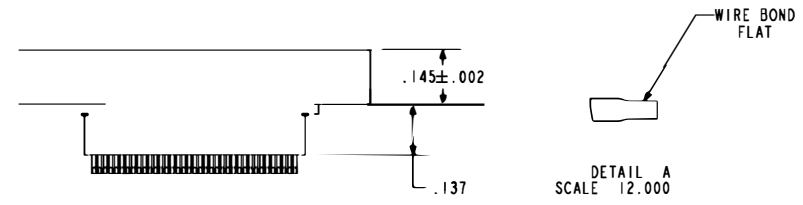
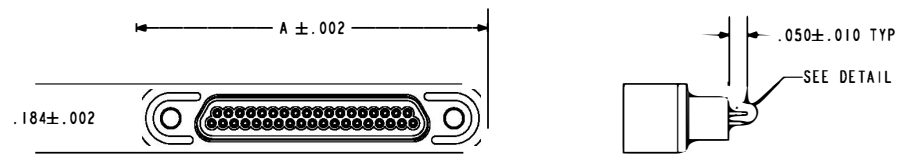


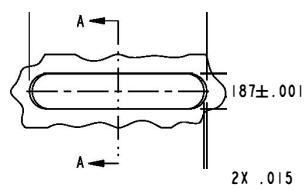
TABLE I			
NUMBER OF CONTACTS	A	B	C
9	.524	.527	.246
15	.614	.617	.336
21	.704	.707	.426
25	.764	.767	.486
31	.854	.857	.576
37	.944	.947	.666
51	1.154	1.157	.876

THESE PRODUCTS ARE SUBJECT TO THE INTERNATIONAL TRAFFIC IN ARMS REGULATIONS ("ITAR"), AND MAY NOT BE REPROD, DIVERTED, TRANSFERRED, TRANSSHIPPED, OR OTHERWISE BE DISPOSED OF IN ANY OTHER COUNTRY, EITHER IN THEIR ORIGINAL FORM OR AFTER BEING INCORPORATED THROUGH AN INTERMEDIATE PROCESS INTO OTHER END ITEMS, WITHOUT THE PRIOR WRITTEN APPROVAL OF THE U.S. DEPARTMENT OF STATE. IN ADDITION, RELATED TECHNICAL DATA MAY NOT BE DISCLOSED, EXPORTED OR TRANSFERRED IN ANY MANNER TO ANY FOREIGN NATIONAL OR ANY FOREIGN COUNTRY WITHOUT PRIOR WRITTEN APPROVAL OF THE DIRECTORATE OF DEFENSE TRADE CONTROLS, U.S. DEPARTMENT OF STATE.

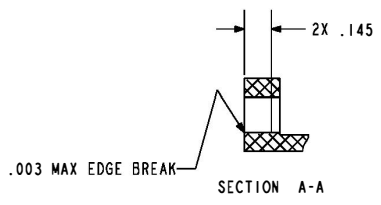


SCALE 2.500
(94662-37 SHOWN)

B ± .001



HOLE DETAIL



A Division of HERMETIC SOLUTIONS The Plastic Revolution Creating Technology		98801
434 Olds Station Rd. Wenatchee WA 98801		WWW.PACAERO.COM
TITLE: CONNECTOR, JR-D, RG, LP, AC, RECEPTACLE		THIRD ANGLE PROJECTION
		CAGE CODE: 64567
VERSION A. -	RELEASE DATE: 09-16-11	0-94747
SALES DRAWING		1 OF 1