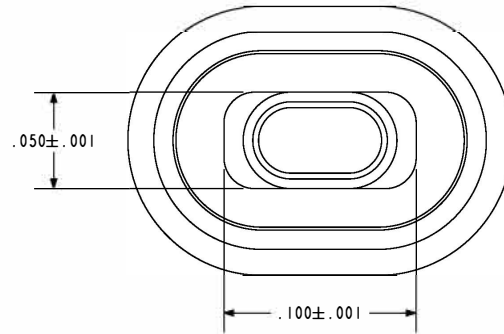
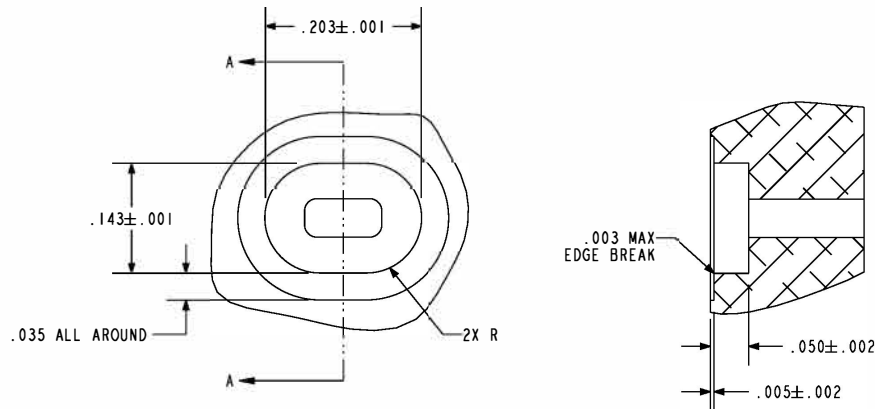
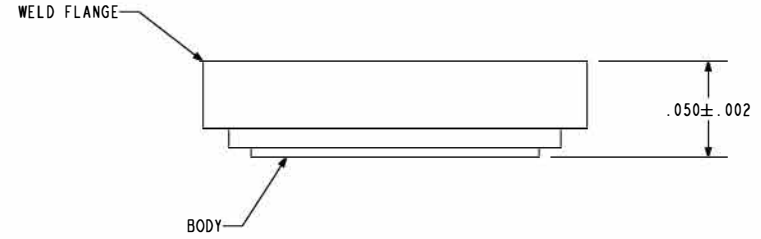
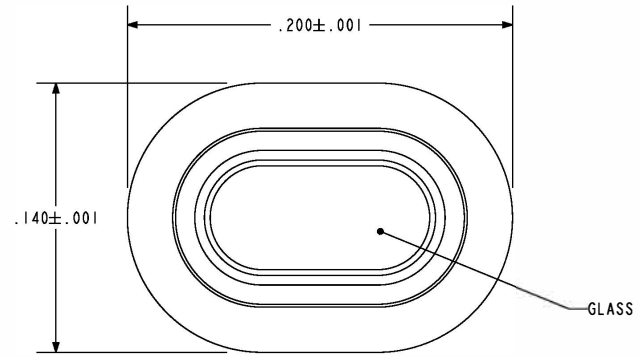


NOTES:

- 1. DESIGNED TO BE LASER WELDED TO AN ALUMINUM HOUSING.
- 2. HERMETIC LEAK RATE: LESS THAN OR EQUAL TO  $1 \times 10^{-9}$  CC/SEC He AT 1 ATM DIFFERENTIAL PRESSURE.
- 3. MATERIALS:  
 WELD FLANGE: EXPLOSION BONDED STAINLESS STEEL TO 4XXX-SERIES ALUMINUM.  
 GLASS: CLEAR 7070 CORNING GLASS.  
 BODY: Ni/Fe/Co (KOVAR) IAW ASTM-F15.
- 4. FINISH:  
 BODY: ELECTROLYTIC NICKEL PLATE IAW QQ-N-290, .000100/.000250 THICK.  
 SHELL: CHEMICAL CONVERSION COAT IAW MIL-C-5541, CLASS 3.
- 5. ORDERING INFORMATION:  
 PLEASE SPECIFY ACCORDING TO THE FOLLOWING  
 94857 - 1



RECOMMENDED HOLE DETAIL



434 Olds Station Rd. Wenatchee WA 98801

WWW.PACAERO.COM

TITLE:

ASSEMBLY, WINDOW, WAVEGUIDE, WR-10

THIRD ANGLE PROJECTION



CAGE CODE: 64567

VERSION A.0

RELEASE DATE: 01-24-12

SALES DRAWING

SHEET: 1 OF 1

DOCUMENT: 0-94857